

# Main innovations from Open IACS project

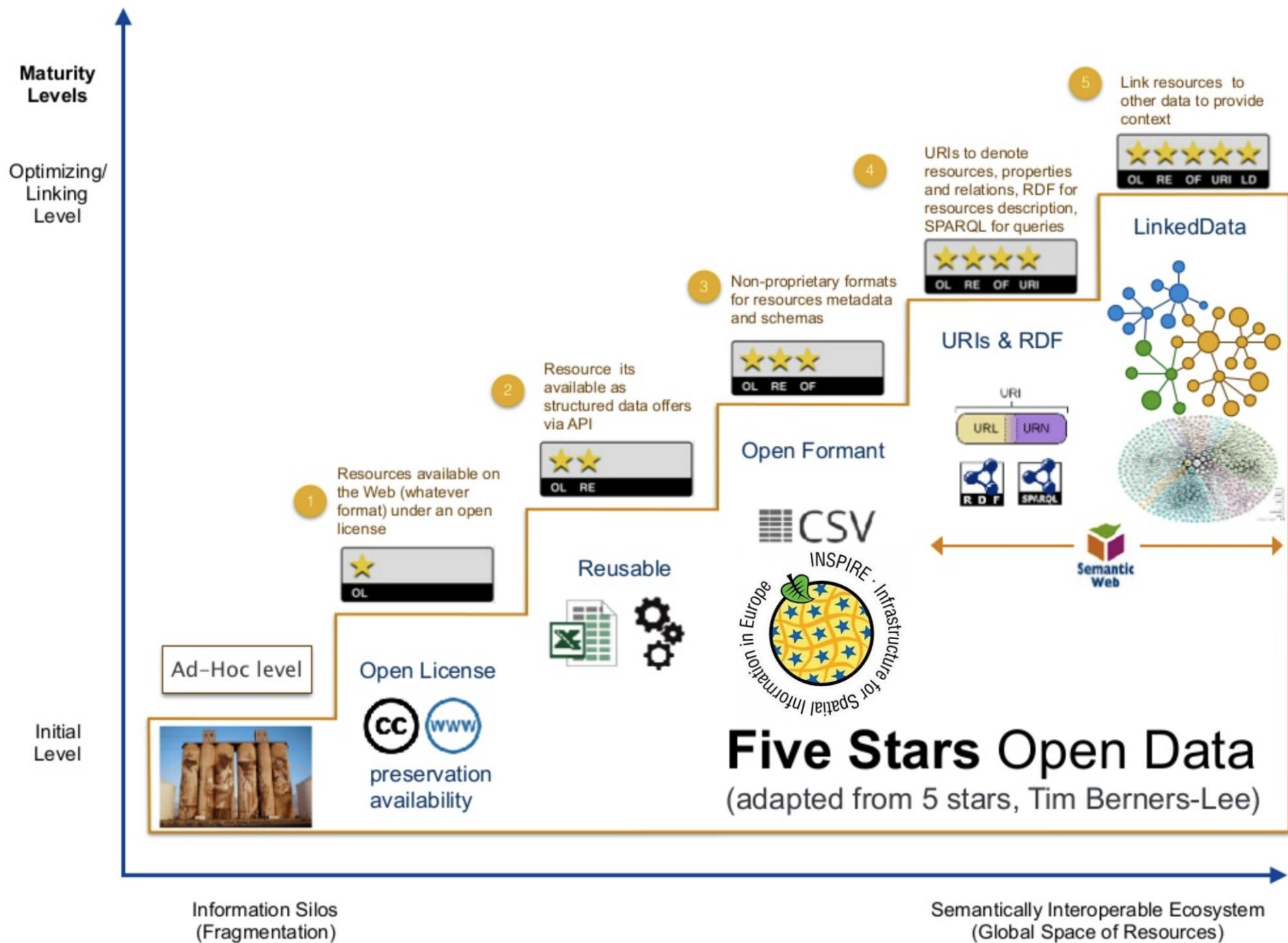
Javier García Guzmán / Mat Montalvo Martínez



Co-financed by the European Union  
Connecting Europe Facility

# Agenda

- 1) Objectives and current results of the project.
- 2) Publication of IACS Linked Open Data
- 3) Relating IACS Linked Open with External Data Sources
- 4) Integration of Open IACS results with INSPIRE.
- 5) Key Issues of the Next Version.



# OPEN IACS Partners

Project will be executed by a consortium composed of three types of partners: CAP Paying agencies, HPC Infrastructure providers and Research organisations. They are:

## Paying Entities and Agriculture Innovation Entities



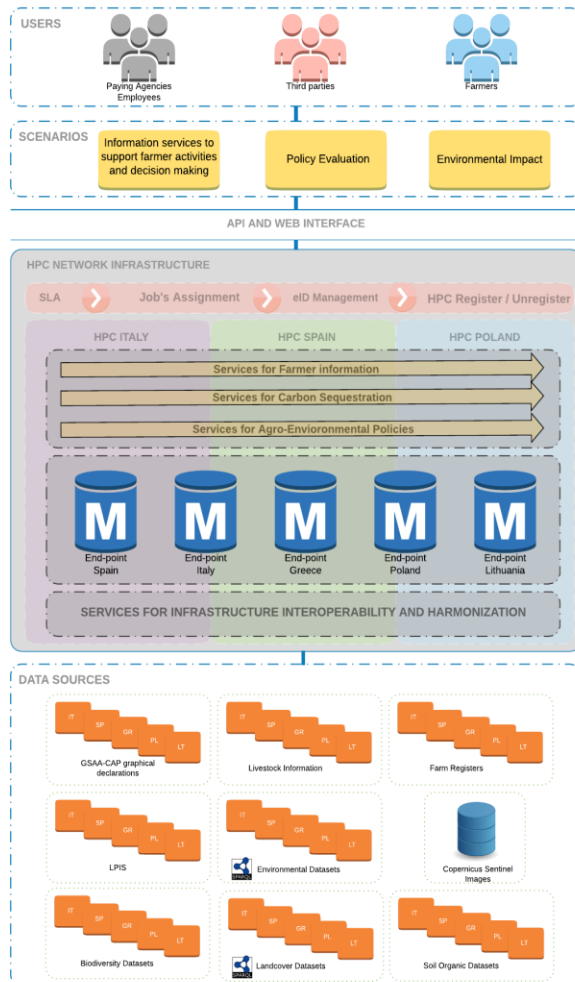
## HPC Infrastructure Providers



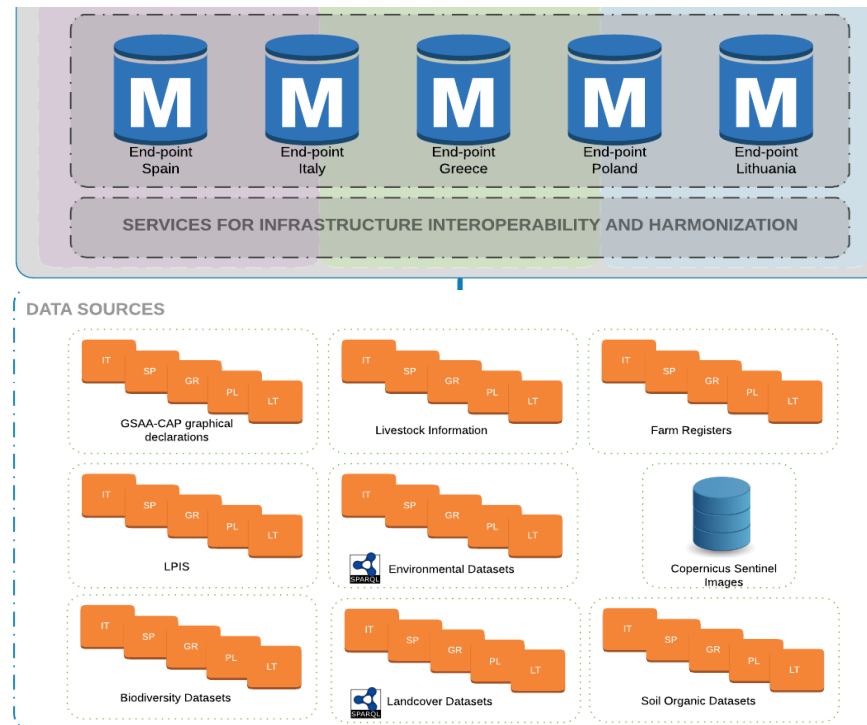
## Research institutions



# Open IACS Objectives

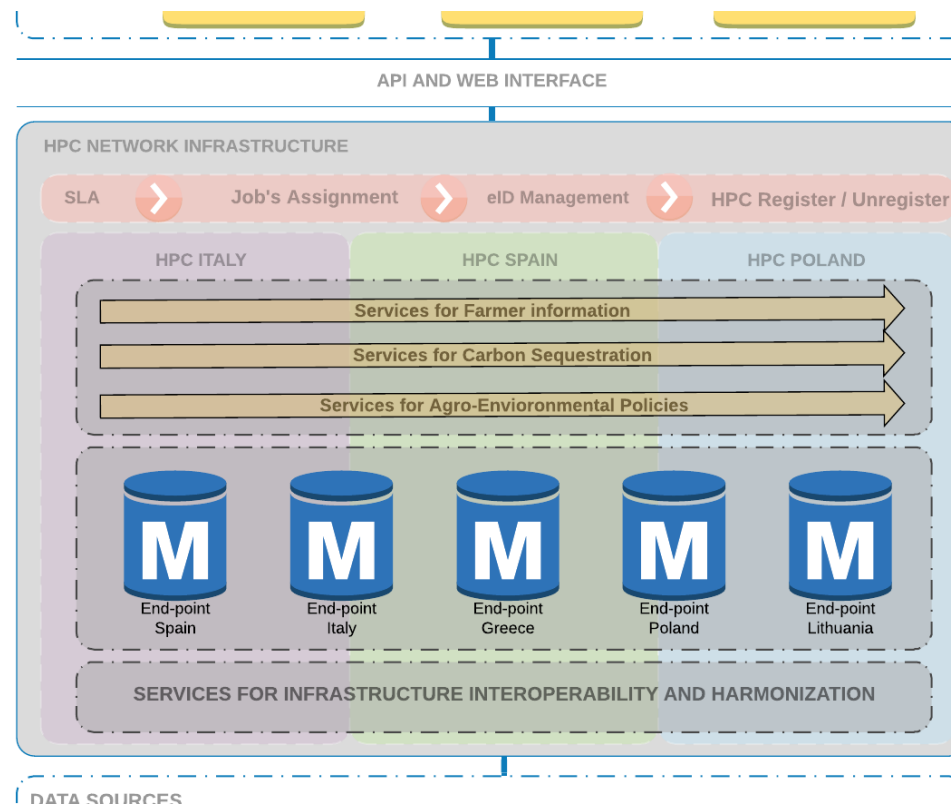
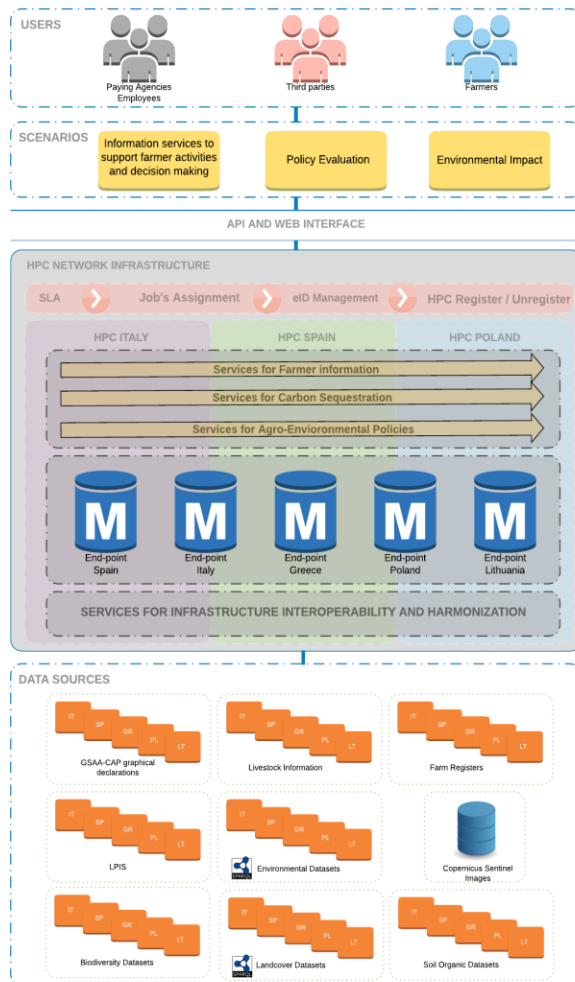


**Design a network of interoperable Linked Open Data End-point considering information for Agri-environmental management of IACS policies**

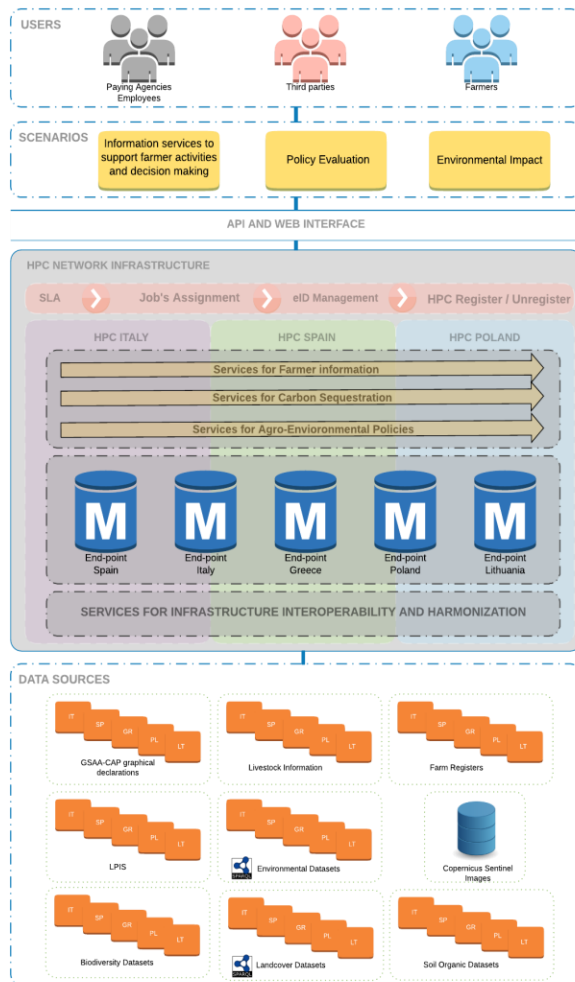


# Open IACS Objectives

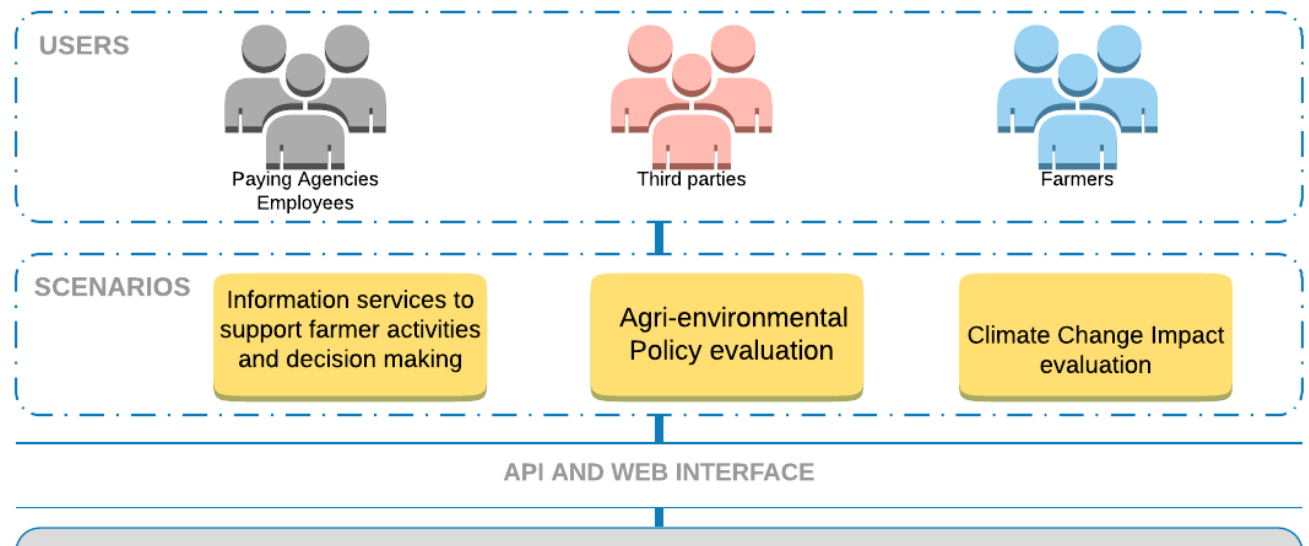
Implement the common agri-environmental infrastructure for IACS policy management by means of increasing HPCs capabilities



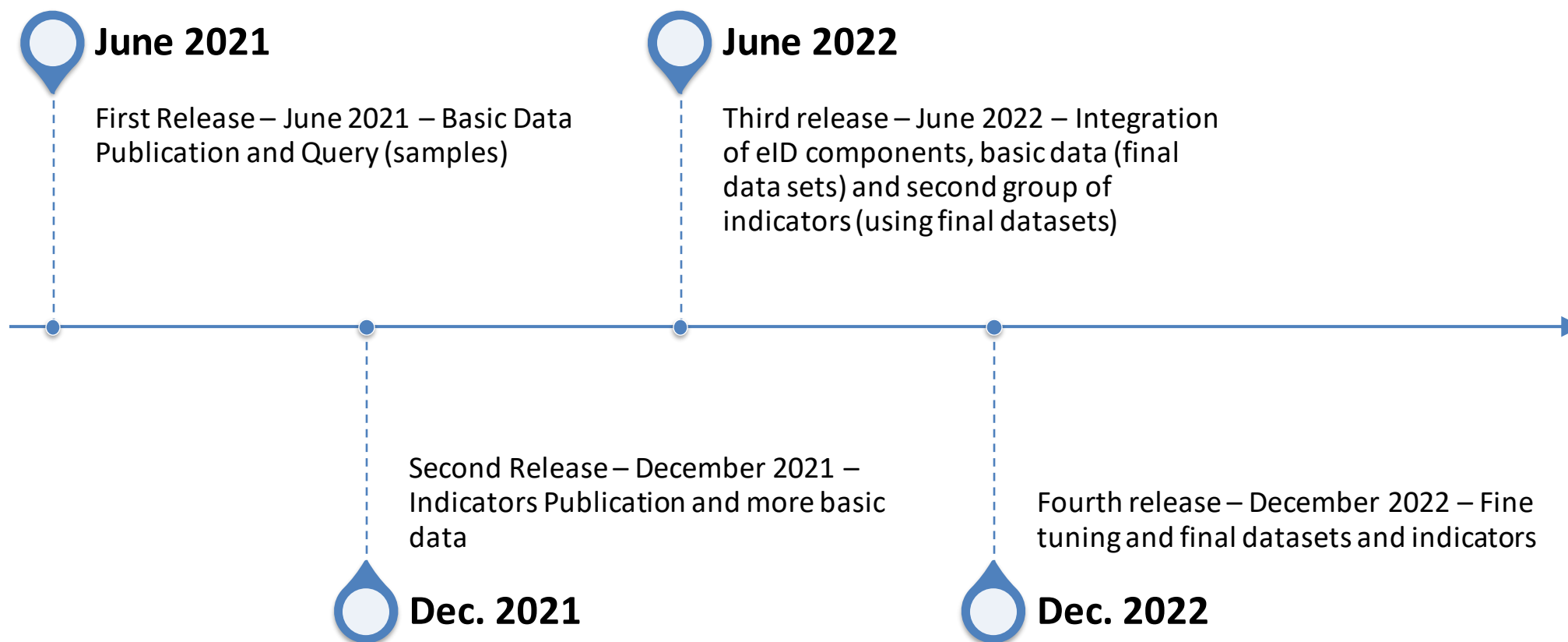
# Open IACS Objectives



**Demonstrate the usefulness of this infrastructure through its application in different scenarios of use**



# Open IACS Development Roadmap

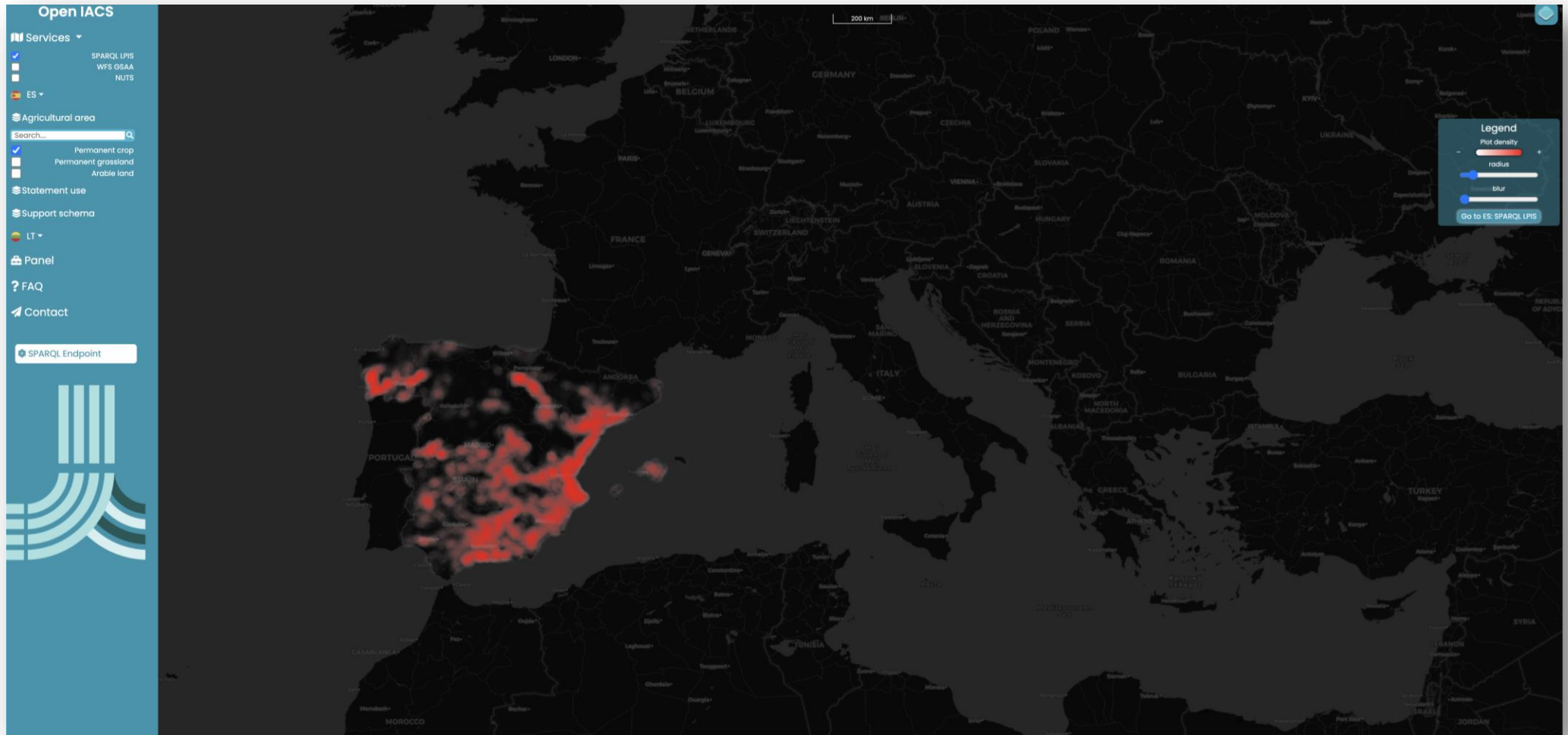




# Agenda

- 1) Objectives and current results of the project.
- 2) Publication of IACS Linked Open Data**
- 3) Relating IACS Linked Open with External Data Sources
- 4) Integration of Open IACS results with INSPIRE.
- 5) Key Issues of the Next Version.

# Web GIS Viewer



# Agenda

- 1) Objectives and current results of the project.
- 2) Publication of IACS Linked Open Data
- 3) Relating IACS Linked Open with External Data Sources**
- 4) Integration of Open IACS results with INSPIRE.
- 5) Key Issues of the Next Version.

# Query Samples

## CROPS LIST

lbScheme	lbConcept	lbLabel
"Agricultural area"@en	"Arable land"@en	"Tierras de cultivo"@es
"Agricultural area"@en	"Arable land"@en	"Tierras de cultivo"@es
"Agricultural area"@en	"Permanent crop"@en	"Cultivos permanentes"@es
"Agricultural area"@en	"Permanent grassland"@en	"Pastos"@es
"Statement use"@en	"Mentha pulegium"@en	"Poleo"@es
"Statement use"@en	"Mentha spicata"@en	"Hierbabuena"@es
"Statement use"@en	"Mentha x piperita"@en	"Menta"@es
"Statement use"@en	"Ocimum basilicum"@en	"Albahaca"@es
"Statement use"@en	"Zea mays"@en	"Maíz"@es
"Statement use"@en	"Origanum vulgare"@en	"Orégano"@es
"Statement use"@en	"Avena sativa"@en	"Avena"@es
"Statement use"@en	"Fagopyrum esculentum"@en	"Alforfón"@es
"Statement use"@en	"Eragrostis tef"@en	"Teff"@es

year	accessURL
"2020""<http://www.w3.org/2001/XMLSchema#string>	<a href="http://185.179.104.23:8082/geoserver/iacs/ows?service=WFS&amp;version=1.0.0&amp;request=GetFeature&amp;typeName=iacs:es_2020_landuse_10k_pnt&amp;outputFormat=app">http://185.179.104.23:8082/geoserver/iacs/ows?service=WFS&amp;version=1.0.0&amp;request=GetFeature&amp;typeName=iacs:es_2020_landuse_10k_pnt&amp;outputFormat=app</a>
"2019""<http://www.w3.org/2001/XMLSchema#string>	<a href="http://185.179.104.23:8082/geoserver/iacs/ows?service=WFS&amp;version=1.0.0&amp;request=GetFeature&amp;typeName=iacs:es_2020_landuse_10k_pnt&amp;outputFormat=app">http://185.179.104.23:8082/geoserver/iacs/ows?service=WFS&amp;version=1.0.0&amp;request=GetFeature&amp;typeName=iacs:es_2020_landuse_10k_pnt&amp;outputFormat=app</a>
"2020""<http://www.w3.org/2001/XMLSchema#string>	<a href="http://185.179.104.23:8082/geoserver/iacs/ows?service=WFS&amp;version=1.0.0&amp;request=GetFeature&amp;typeName=iacs:es_2020_landuse_10k_pnt&amp;outputFormat=app">http://185.179.104.23:8082/geoserver/iacs/ows?service=WFS&amp;version=1.0.0&amp;request=GetFeature&amp;typeName=iacs:es_2020_landuse_10k_pnt&amp;outputFormat=app</a>
"2020""<http://www.w3.org/2001/XMLSchema#string>	<a href="http://185.179.104.23:8082/geoserver/iacs/ows?service=WFS&amp;version=1.0.0&amp;request=GetFeature&amp;typeName=iacs:es_2020_landuse_10k_pnt&amp;outputFormat=app">http://185.179.104.23:8082/geoserver/iacs/ows?service=WFS&amp;version=1.0.0&amp;request=GetFeature&amp;typeName=iacs:es_2020_landuse_10k_pnt&amp;outputFormat=app</a>
"2020""<http://www.w3.org/2001/XMLSchema#string>	<a href="http://185.179.104.23:8082/geoserver/iacs/ows?service=WFS&amp;version=1.0.0&amp;request=GetFeature&amp;typeName=iacs:es_2020_statementuse_10k_pnt&amp;outputFormat=app">http://185.179.104.23:8082/geoserver/iacs/ows?service=WFS&amp;version=1.0.0&amp;request=GetFeature&amp;typeName=iacs:es_2020_statementuse_10k_pnt&amp;outputFormat=app</a>
"2020""<http://www.w3.org/2001/XMLSchema#string>	<a href="http://185.179.104.23:8082/geoserver/iacs/ows?service=WFS&amp;version=1.0.0&amp;request=GetFeature&amp;typeName=iacs:es_2020_statementuse_10k_pnt&amp;outputFormat=app">http://185.179.104.23:8082/geoserver/iacs/ows?service=WFS&amp;version=1.0.0&amp;request=GetFeature&amp;typeName=iacs:es_2020_statementuse_10k_pnt&amp;outputFormat=app</a>
"2020""<http://www.w3.org/2001/XMLSchema#string>	<a href="http://185.179.104.23:8082/geoserver/iacs/ows?service=WFS&amp;version=1.0.0&amp;request=GetFeature&amp;typeName=iacs:es_2020_statementuse_10k_pnt&amp;outputFormat=app">http://185.179.104.23:8082/geoserver/iacs/ows?service=WFS&amp;version=1.0.0&amp;request=GetFeature&amp;typeName=iacs:es_2020_statementuse_10k_pnt&amp;outputFormat=app</a>
"2020""<http://www.w3.org/2001/XMLSchema#string>	<a href="http://185.179.104.23:8082/geoserver/iacs/ows?service=WFS&amp;version=1.0.0&amp;request=GetFeature&amp;typeName=iacs:es_2020_statementuse_10k_pnt&amp;outputFormat=app">http://185.179.104.23:8082/geoserver/iacs/ows?service=WFS&amp;version=1.0.0&amp;request=GetFeature&amp;typeName=iacs:es_2020_statementuse_10k_pnt&amp;outputFormat=app</a>
"2020""<http://www.w3.org/2001/XMLSchema#string>	<a href="http://185.179.104.23:8082/geoserver/iacs/ows?service=WFS&amp;version=1.0.0&amp;request=GetFeature&amp;typeName=iacs:es_2020_statementuse_10k_pnt&amp;outputFormat=app">http://185.179.104.23:8082/geoserver/iacs/ows?service=WFS&amp;version=1.0.0&amp;request=GetFeature&amp;typeName=iacs:es_2020_statementuse_10k_pnt&amp;outputFormat=app</a>
"2020""<http://www.w3.org/2001/XMLSchema#string>	<a href="http://185.179.104.23:8082/geoserver/iacs/ows?service=WFS&amp;version=1.0.0&amp;request=GetFeature&amp;typeName=iacs:es_2020_statementuse_10k_pnt&amp;outputFormat=app">http://185.179.104.23:8082/geoserver/iacs/ows?service=WFS&amp;version=1.0.0&amp;request=GetFeature&amp;typeName=iacs:es_2020_statementuse_10k_pnt&amp;outputFormat=app</a>
"2020""<http://www.w3.org/2001/XMLSchema#string>	<a href="http://185.179.104.23:8082/geoserver/iacs/ows?service=WFS&amp;version=1.0.0&amp;request=GetFeature&amp;typeName=iacs:es_2020_statementuse_10k_pnt&amp;outputFormat=app">http://185.179.104.23:8082/geoserver/iacs/ows?service=WFS&amp;version=1.0.0&amp;request=GetFeature&amp;typeName=iacs:es_2020_statementuse_10k_pnt&amp;outputFormat=app</a>
"2020""<http://www.w3.org/2001/XMLSchema#string>	<a href="http://185.179.104.23:8082/geoserver/iacs/ows?service=WFS&amp;version=1.0.0&amp;request=GetFeature&amp;typeName=iacs:es_2020_statementuse_10k_pnt&amp;outputFormat=app">http://185.179.104.23:8082/geoserver/iacs/ows?service=WFS&amp;version=1.0.0&amp;request=GetFeature&amp;typeName=iacs:es_2020_statementuse_10k_pnt&amp;outputFormat=app</a>
"2020""<http://www.w3.org/2001/XMLSchema#string>	<a href="http://185.179.104.23:8082/geoserver/iacs/ows?service=WFS&amp;version=1.0.0&amp;request=GetFeature&amp;typeName=iacs:es_2020_statementuse_10k_pnt&amp;outputFormat=app">http://185.179.104.23:8082/geoserver/iacs/ows?service=WFS&amp;version=1.0.0&amp;request=GetFeature&amp;typeName=iacs:es_2020_statementuse_10k_pnt&amp;outputFormat=app</a>
"2020""<http://www.w3.org/2001/XMLSchema#string>	<a href="http://185.179.104.23:8082/geoserver/iacs/ows?service=WFS&amp;version=1.0.0&amp;request=GetFeature&amp;typeName=iacs:es_2020_statementuse_10k_pnt&amp;outputFormat=app">http://185.179.104.23:8082/geoserver/iacs/ows?service=WFS&amp;version=1.0.0&amp;request=GetFeature&amp;typeName=iacs:es_2020_statementuse_10k_pnt&amp;outputFormat=app</a>

## LPIS GEOMETRIES

# Support to External Research – Forest Inventory

# LPIS GEOMETRIES

Feature	Label
<a href="http://w3id.org/iaacs/open/es/LPIS/Parcel/1205439985">http://w3id.org/iaacs/open/es/LPIS/Parcel/1205439985</a>	"Spanish LPIS parcel of cadastral reference #13-57-0-73-24-1""<http://www.w3.org/2001/XMLSchema#string>
<a href="http://w3id.org/iaacs/open/es/LPIS/Parcel/1205440027">http://w3id.org/iaacs/open/es/LPIS/Parcel/1205440027</a>	"Spanish LPIS parcel of cadastral reference #13-57-0-73-1029-7""<http://www.w3.org/2001/XMLSchema#string>
<a href="http://w3id.org/iaacs/open/es/LPIS/Parcel/1205440035">http://w3id.org/iaacs/open/es/LPIS/Parcel/1205440035</a>	"Spanish LPIS parcel of cadastral reference #13-57-0-73-1029-3""<http://www.w3.org/2001/XMLSchema#string>
<a href="http://w3id.org/iaacs/open/es/LPIS/Parcel/1287875620">http://w3id.org/iaacs/open/es/LPIS/Parcel/1287875620</a>	"Spanish LPIS parcel of cadastral reference #13-57-0-73-1029-8""<http://www.w3.org/2001/XMLSchema#string>
<a href="http://w3id.org/iaacs/open/es/LPIS/Parcel/1287875621">http://w3id.org/iaacs/open/es/LPIS/Parcel/1287875621</a>	"Spanish LPIS parcel of cadastral reference #13-57-0-73-1029-9""<http://www.w3.org/2001/XMLSchema#string>
<a href="http://w3id.org/iaacs/open/es/LPIS/Parcel/1300069738">http://w3id.org/iaacs/open/es/LPIS/Parcel/1300069738</a>	"Spanish LPIS parcel of cadastral reference #13-57-0-73-195-4""<http://www.w3.org/2001/XMLSchema#string>
<a href="http://w3id.org/iaacs/open/es/LPIS/Parcel/1353502156">http://w3id.org/iaacs/open/es/LPIS/Parcel/1353502156</a>	"Spanish LPIS parcel of cadastral reference #13-57-0-73-24-6""<http://www.w3.org/2001/XMLSchema#string>
<a href="http://w3id.org/iaacs/open/es/LPIS/Parcel/870292452">http://w3id.org/iaacs/open/es/LPIS/Parcel/870292452</a>	"Spanish LPIS parcel of cadastral reference #13-57-0-73-191-2""<http://www.w3.org/2001/XMLSchema#string>
<a href="http://w3id.org/iaacs/open/es/LPIS/Parcel/870292454">http://w3id.org/iaacs/open/es/LPIS/Parcel/870292454</a>	"Spanish LPIS parcel of cadastral reference #13-57-0-73-195-2""<http://www.w3.org/2001/XMLSchema#string>
<a href="http://w3id.org/iaacs/open/es/LPIS/Parcel/870292609">http://w3id.org/iaacs/open/es/LPIS/Parcel/870292609</a>	"Spanish LPIS parcel of cadastral reference #13-57-0-73-9001-1""<http://www.w3.org/2001/XMLSchema#string>
<a href="http://w3id.org/iaacs/open/es/LPIS/Parcel/982673580">http://w3id.org/iaacs/open/es/LPIS/Parcel/982673580</a>	"Spanish LPIS parcel of cadastral reference #13-57-0-73-1000-2""<http://www.w3.org/2001/XMLSchema#string>
<a href="https://datos.ign.es/recurso/btn100/provincia/ciudad-real">https://datos.ign.es/recurso/btn100/provincia/ciudad-real</a>	"Ciudad Real"
<a href="https://datos.iepnb.es/recurso/sector-publico/cuadricula-esnacio/celda/10kmE317N183">https://datos.iepnb.es/recurso/sector-publico/cuadricula-esnacio/celda/10kmE317N183</a>	

## Forest inventory



# Support to External Research – Common Crops Vocabulary

lbScheme	lbConcept	accessURL	country
"Agricultural area"@en	"Arable land"@en	<a href="http://185.179.104.23:8082/geoserver/iacs/ows?service=WFS&amp;version=1.0.0&amp;request=GetFeature&amp;typeName=iacs:es_2020_landuse_10k">http://185.179.104.23:8082/geoserver/iacs/ows?service=WFS&amp;version=1.0.0&amp;request=GetFeature&amp;typeName=iacs:es_2020_landuse_10k</a>	"ES"
"Agricultural area"@en	"Permanent crop"@en	<a href="http://185.179.104.23:8082/geoserver/iacs/ows?service=WFS&amp;version=1.0.0&amp;request=GetFeature&amp;typeName=iacs:es_2020_landuse_10k">http://185.179.104.23:8082/geoserver/iacs/ows?service=WFS&amp;version=1.0.0&amp;request=GetFeature&amp;typeName=iacs:es_2020_landuse_10k</a>	"ES"
"Agricultural area"@en	"Permanent grassland"@en	<a href="http://185.179.104.23:8082/geoserver/iacs/ows?service=WFS&amp;version=1.0.0&amp;request=GetFeature&amp;typeName=iacs:es_2020_landuse_10k">http://185.179.104.23:8082/geoserver/iacs/ows?service=WFS&amp;version=1.0.0&amp;request=GetFeature&amp;typeName=iacs:es_2020_landuse_10k</a>	"ES"
"Statement use"@en	"Abelmoschus esculentus"@en	<a href="http://185.179.104.23:8082/geoserver/iacs/ows?service=WFS&amp;version=1.0.0&amp;request=GetFeature&amp;typeName=iacs:es_2020_statementuse">http://185.179.104.23:8082/geoserver/iacs/ows?service=WFS&amp;version=1.0.0&amp;request=GetFeature&amp;typeName=iacs:es_2020_statementuse</a>	"ES"
"Statement use"@en	"Abies alba"@en	<a href="http://185.179.104.23:8082/geoserver/iacs/ows?service=WFS&amp;version=1.0.0&amp;request=GetFeature&amp;typeName=iacs:es_2020_statementuse">http://185.179.104.23:8082/geoserver/iacs/ows?service=WFS&amp;version=1.0.0&amp;request=GetFeature&amp;typeName=iacs:es_2020_statementuse</a>	"ES"
"Statement use"@en	"Abies pinsapo"@en	<a href="http://185.179.104.23:8082/geoserver/iacs/ows?service=WFS&amp;version=1.0.0&amp;request=GetFeature&amp;typeName=iacs:es_2020_statementuse">http://185.179.104.23:8082/geoserver/iacs/ows?service=WFS&amp;version=1.0.0&amp;request=GetFeature&amp;typeName=iacs:es_2020_statementuse</a>	"ES"
"Statement use"@en	"Achillea millefolium"@en	<a href="http://185.179.104.23:8082/geoserver/iacs/ows?service=WFS&amp;version=1.0.0&amp;request=GetFeature&amp;typeName=iacs:es_2020_statementuse">http://185.179.104.23:8082/geoserver/iacs/ows?service=WFS&amp;version=1.0.0&amp;request=GetFeature&amp;typeName=iacs:es_2020_statementuse</a>	"ES"
"Statement use"@en	"Actinidia deliciosa"@en	<a href="http://185.179.104.23:8082/geoserver/iacs/ows?service=WFS&amp;version=1.0.0&amp;request=GetFeature&amp;typeName=iacs:es_2020_statementuse">http://185.179.104.23:8082/geoserver/iacs/ows?service=WFS&amp;version=1.0.0&amp;request=GetFeature&amp;typeName=iacs:es_2020_statementuse</a>	"ES"
"Statement use"@en	"Agaricus bisporus"@en	<a href="http://185.179.104.23:8082/geoserver/iacs/ows?service=WFS&amp;version=1.0.0&amp;request=GetFeature&amp;typeName=iacs:es_2020_statementuse">http://185.179.104.23:8082/geoserver/iacs/ows?service=WFS&amp;version=1.0.0&amp;request=GetFeature&amp;typeName=iacs:es_2020_statementuse</a>	"ES"
"Statement use"@en	"Agave sisalana"@en	<a href="http://185.179.104.23:8082/geoserver/iacs/ows?service=WFS&amp;version=1.0.0&amp;request=GetFeature&amp;typeName=iacs:es_2020_statementuse">http://185.179.104.23:8082/geoserver/iacs/ows?service=WFS&amp;version=1.0.0&amp;request=GetFeature&amp;typeName=iacs:es_2020_statementuse</a>	"ES"
"Statement use"@en	"Agrimonia eupatoria"@en	<a href="http://185.179.104.23:8082/geoserver/iacs/ows?service=WFS&amp;version=1.0.0&amp;request=GetFeature&amp;typeName=iacs:es_2020_statementuse">http://185.179.104.23:8082/geoserver/iacs/ows?service=WFS&amp;version=1.0.0&amp;request=GetFeature&amp;typeName=iacs:es_2020_statementuse</a>	"ES"
"Statement use"@en	"Ailanthus altissima"@en	<a href="http://185.179.104.23:8082/geoserver/iacs/ows?service=WFS&amp;version=1.0.0&amp;request=GetFeature&amp;typeName=iacs:es_2020_statementuse">http://185.179.104.23:8082/geoserver/iacs/ows?service=WFS&amp;version=1.0.0&amp;request=GetFeature&amp;typeName=iacs:es_2020_statementuse</a>	"ES"

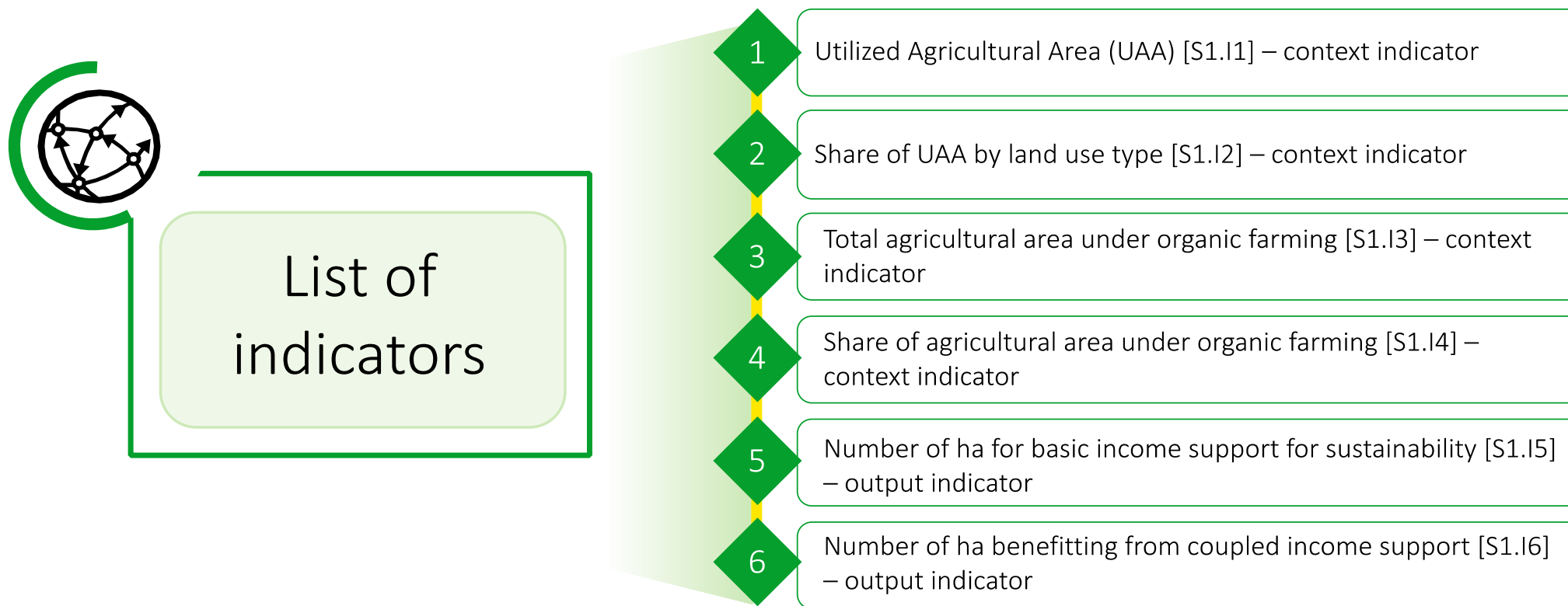
List all distribution and access URL

# Support to External Research – Common Crops Vocabulary

uri	eppo_code	scientificName	code_eppo
<a href="http://open-iacs.eu/resource/taxon/1000">http://open-iacs.eu/resource/taxon/1000</a>	"MENCU"	"Mentha cunninghamii"	"1000"
<a href="http://open-iacs.eu/resource/taxon/1001">http://open-iacs.eu/resource/taxon/1001</a>	"MENJA"	"Mentha japonica"	"1001"
<a href="http://open-iacs.eu/resource/taxon/1002">http://open-iacs.eu/resource/taxon/1002</a>	"MENLO"	"Mentha longifolia"	"1002"
<a href="http://open-iacs.eu/resource/taxon/1003">http://open-iacs.eu/resource/taxon/1003</a>	"MENLC"	"Mentha longifolia subsp. capensis"	"1003"
<a href="http://open-iacs.eu/resource/taxon/1004">http://open-iacs.eu/resource/taxon/1004</a>	"MENLT"	"Mentha longifolia subsp. typhoides"	"1004"
<a href="http://open-iacs.eu/resource/taxon/1005">http://open-iacs.eu/resource/taxon/1005</a>	"MENMC"	"Mentha micrantha"	"1005"
<a href="http://open-iacs.eu/resource/taxon/1006">http://open-iacs.eu/resource/taxon/1006</a>	"MENMI"	"Mentha microphylla"	"1006"
<a href="http://open-iacs.eu/resource/taxon/1007">http://open-iacs.eu/resource/taxon/1007</a>	"MENPU"	"Mentha pulegium"	"1007"
<a href="http://open-iacs.eu/resource/taxon/1008">http://open-iacs.eu/resource/taxon/1008</a>	"MENRE"	"Mentha requienii"	"1008"
<a href="http://open-iacs.eu/resource/taxon/1009">http://open-iacs.eu/resource/taxon/1009</a>	"MENZA"	"Mentha satereioides"	"1009"
<a href="http://open-iacs.eu/resource/taxon/1010">http://open-iacs.eu/resource/taxon/1010</a>	"MENSS"	"Mentha sp."	"1010"
<a href="http://open-iacs.eu/resource/taxon/1011">http://open-iacs.eu/resource/taxon/1011</a>	"MENSP"	"Mentha spicata"	"1011"
<a href="http://open-iacs.eu/resource/taxon/1012">http://open-iacs.eu/resource/taxon/1012</a>	"MENSC"	"Mentha spicata var. crispa"	"1012"
<a href="http://open-iacs.eu/resource/taxon/1013">http://open-iacs.eu/resource/taxon/1013</a>	"MENST"	"Mentha spicata var. tenuis"	"1013"
<a href="http://open-iacs.eu/resource/taxon/1014">http://open-iacs.eu/resource/taxon/1014</a>	"MENSU"	"Mentha suaveolens"	"1014"
<a href="http://open-iacs.eu/resource/taxon/1015">http://open-iacs.eu/resource/taxon/1015</a>	"MENSI"	"Mentha suaveolens subsp. insularis"	"1015"

List of taxon's, EPPO code and scientific Name

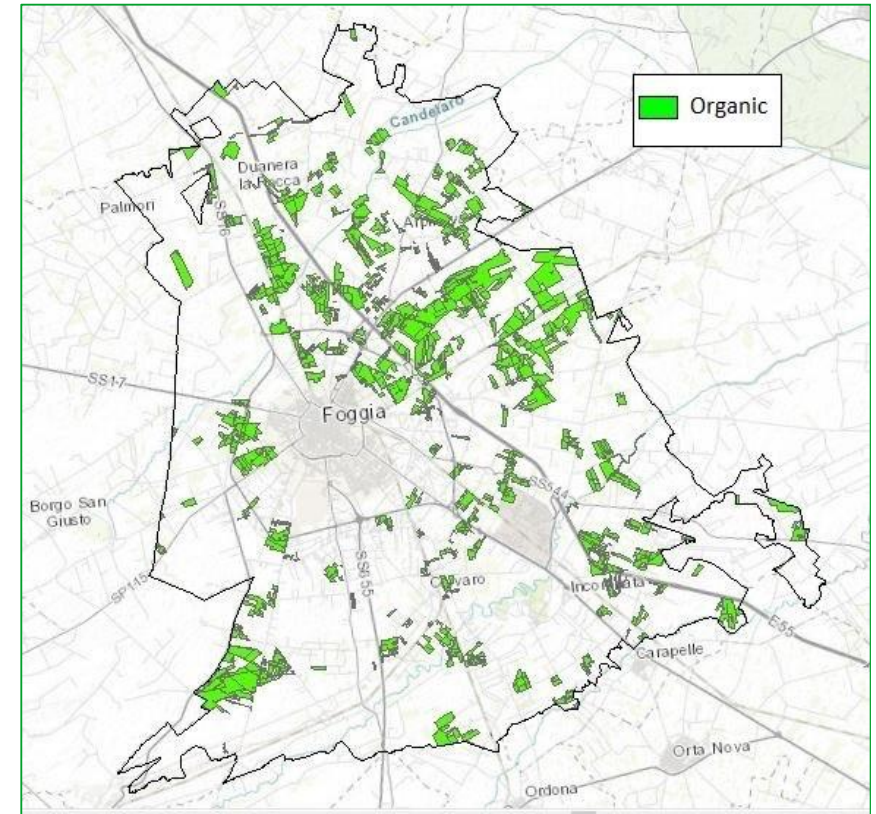
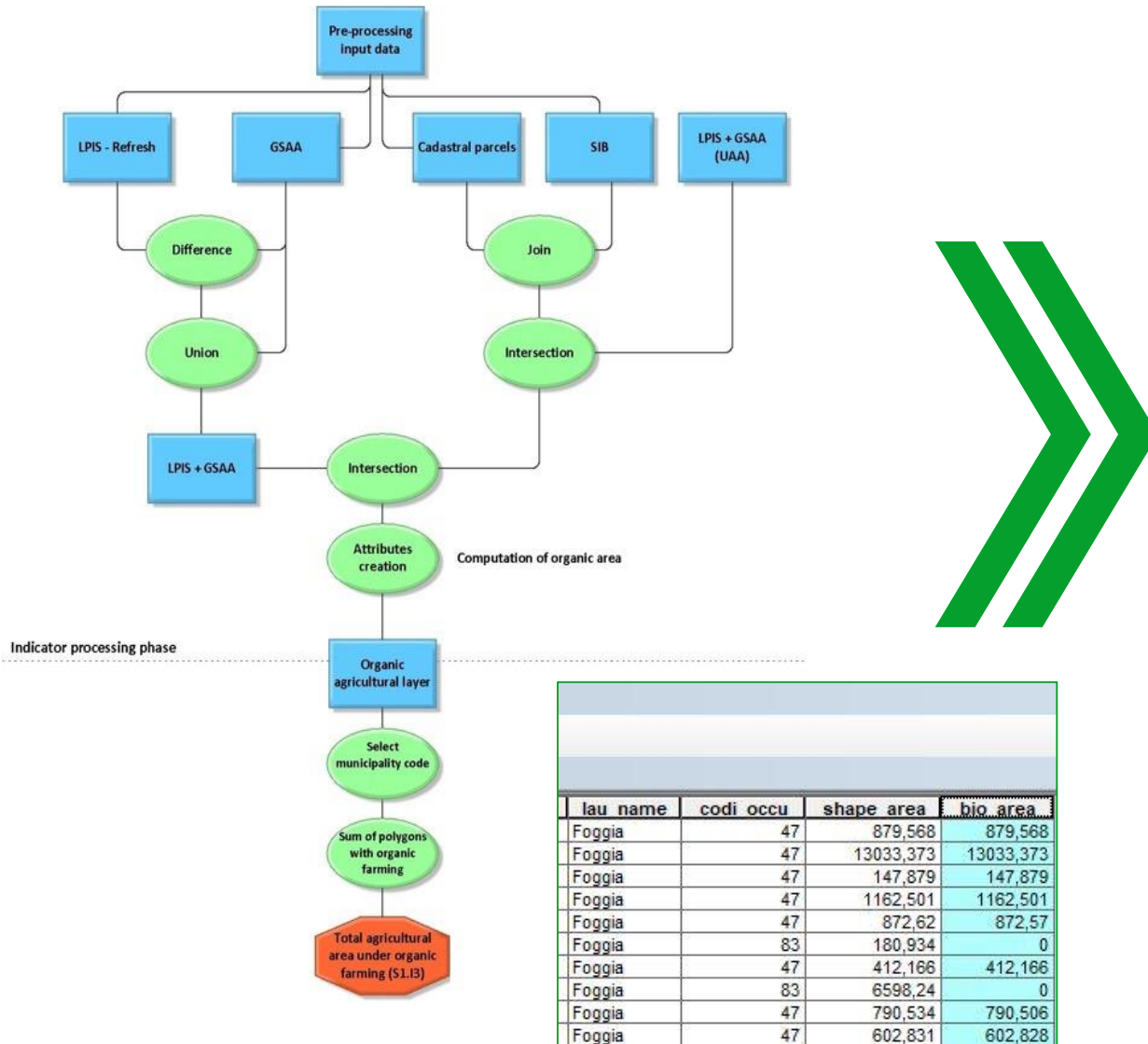
# Support to Farmers' Decision Making



.... Other agri-environmental indicators (ISPRA)



# Support to Farmers' Decision Making



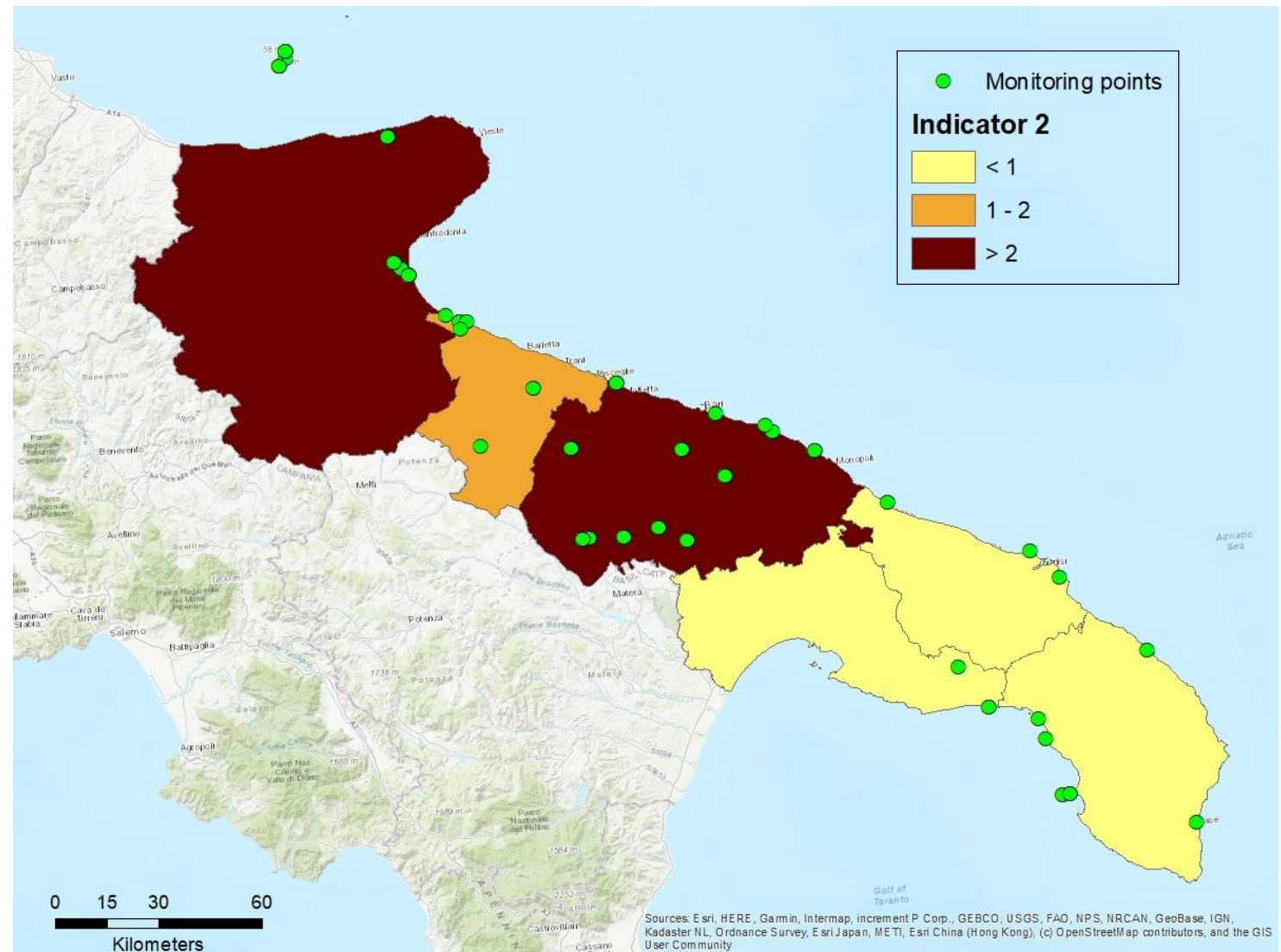
MUNICIPALITY	Organic agricultural area (ha)
Foggia	2,690

# Biodiversity Indicators

- How agriculture affects biodiversity and vice versa?
  - **EEA - Abundance and distribution of selected species in Europe**
- Is it possible to identify some indicators?
  - **Depends on data**

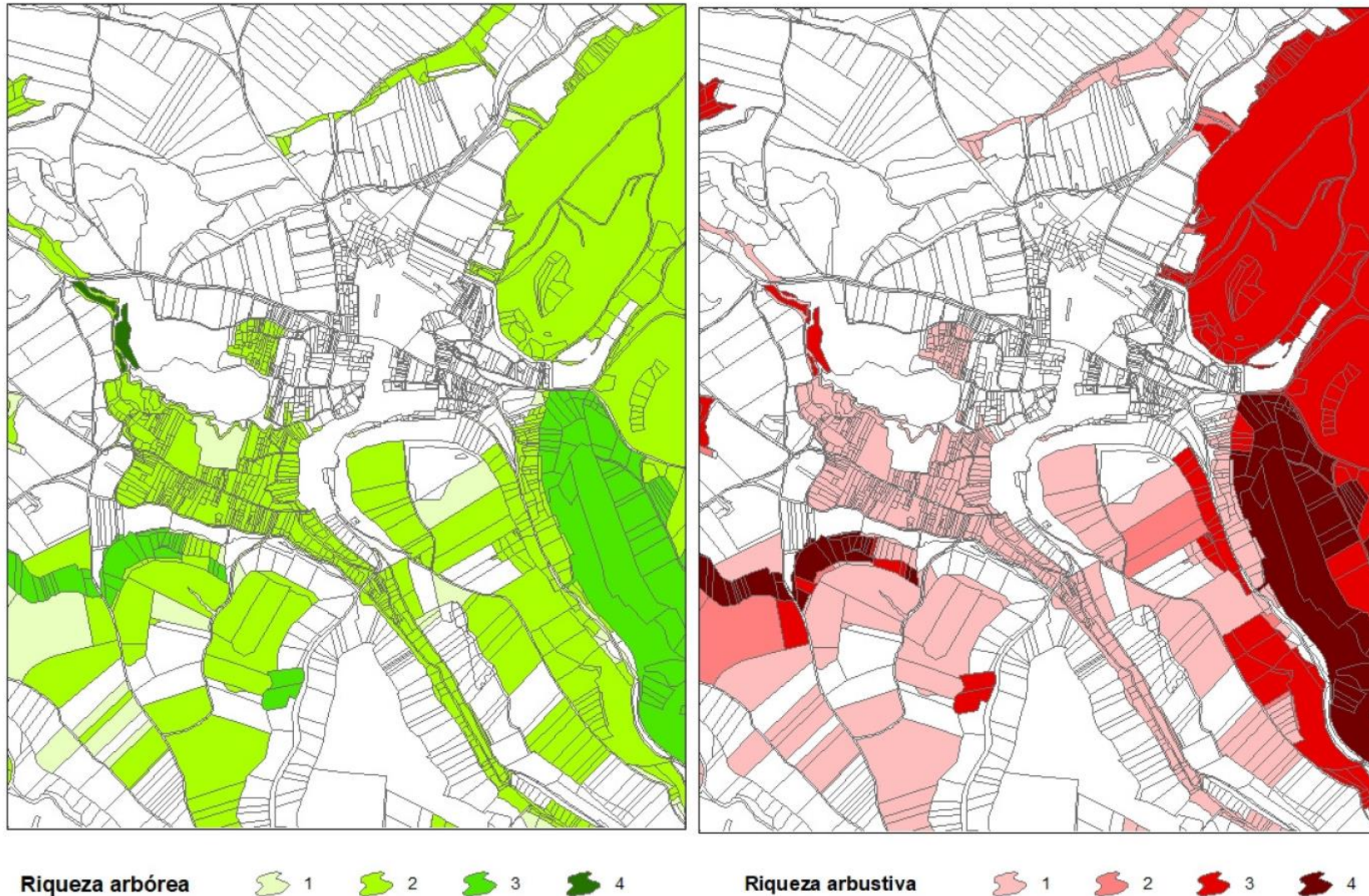
# Biodiversity Indicators

## Test in Apulia Region



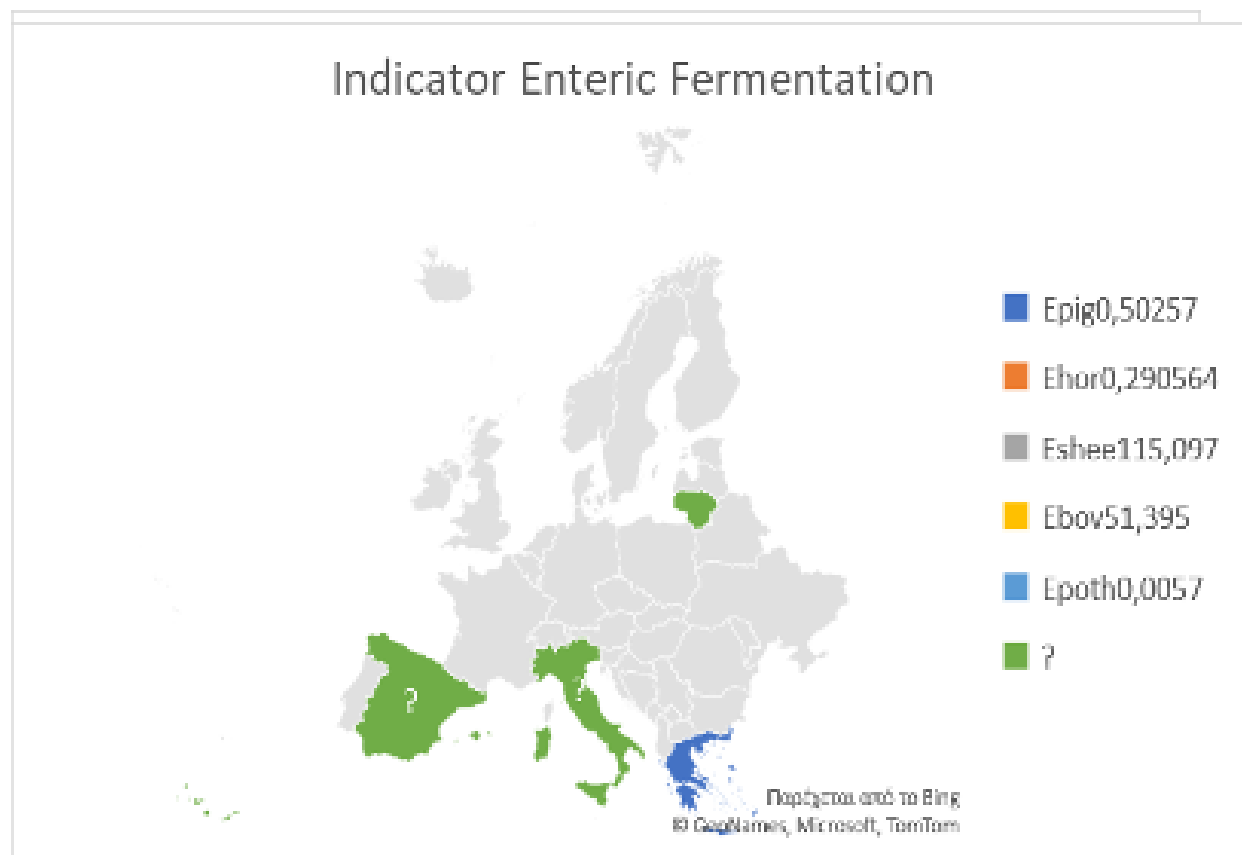


# Biodiversity Indicators – Forest Richness



# GHG Emissions

Enteric  
Fermentation  
map  
(2018)



Livestock related information

# Agenda

- 1) Objectives and current results of the project.
- 2) Publication of IACS Linked Open Data
- 3) Relating IACS Linked Open with External Data Sources
- 4) Integration of Open IACS results with INSPIRE.**
- 5) Key Issues of the Next Version.

# Strategy for Integration with JRC-INSPIRE



Models and ontologies



LOD Data generation



LOD Data visualization

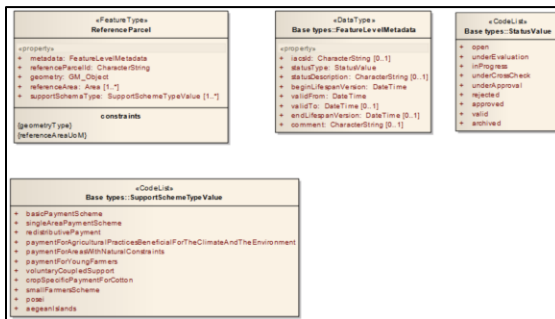


Integration with other non-INSPIRE services promoted by other DGs

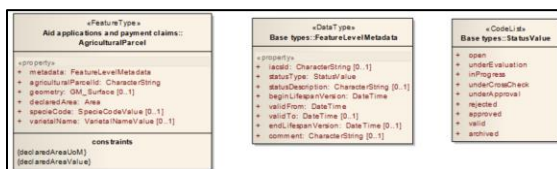
# Strategy for Integration with JRC-INSPIRE – Models

Reuse and adapt already existing models

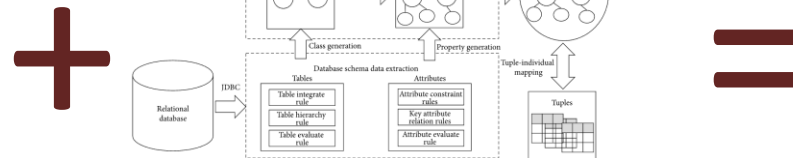
LPIS



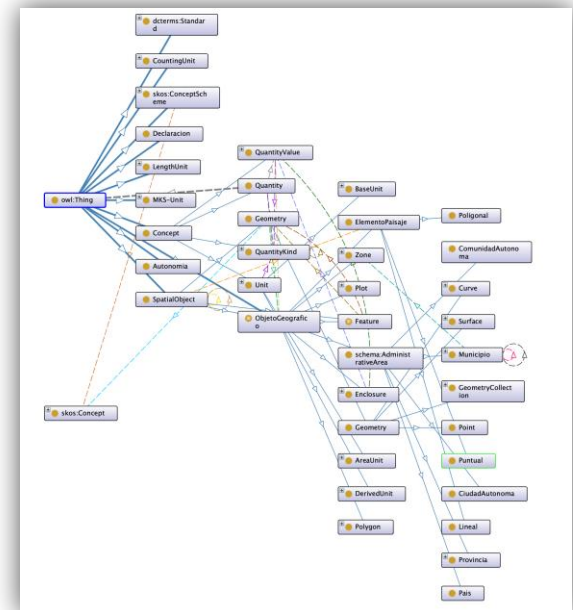
GSAA



Ontology Generation Rules

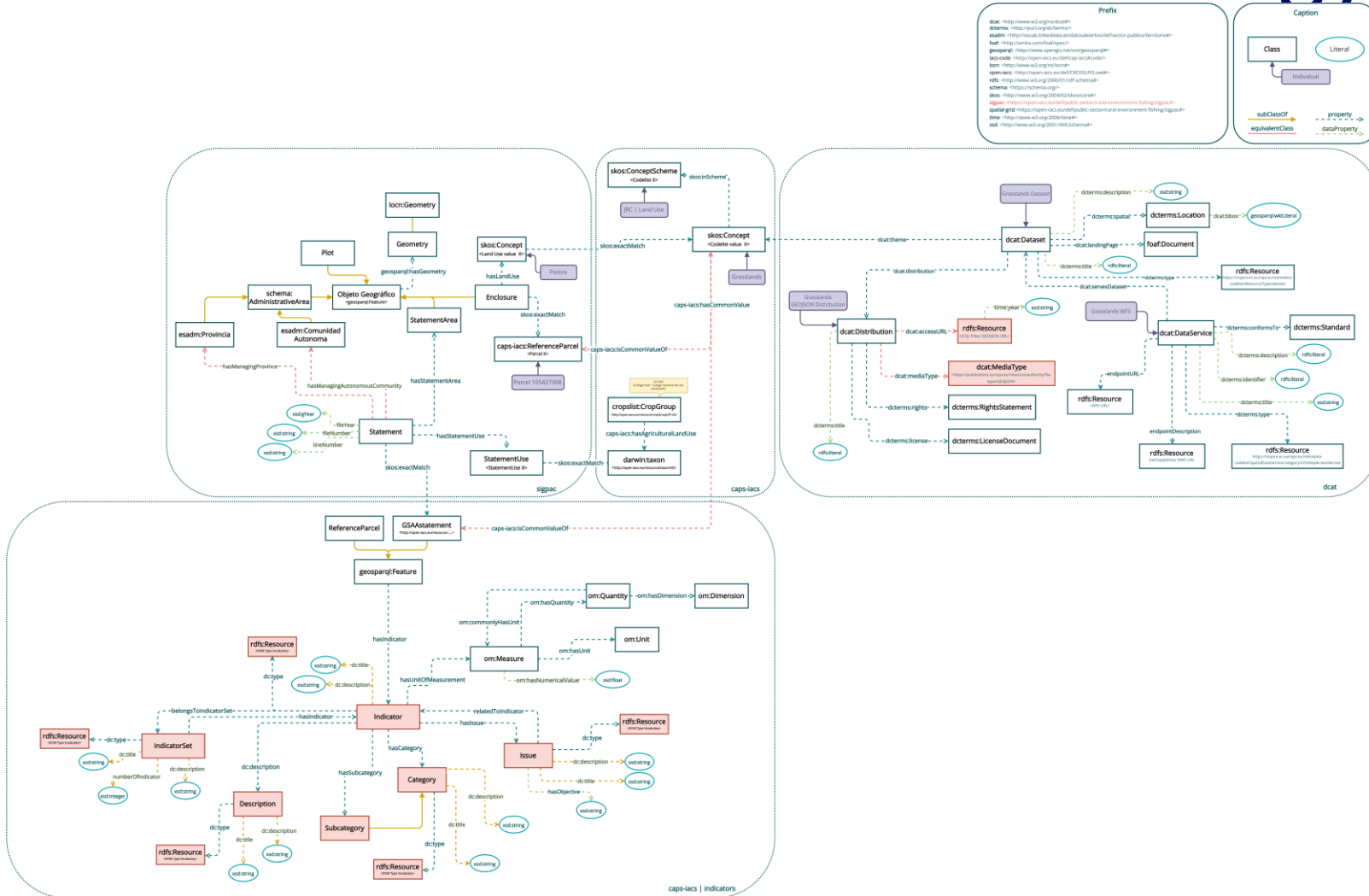


Ontology





# Strategy for Integration with JRC-INSPIRE – Geo-services Ontology



# Strategy for Integration with JRC-INSPIRE – LOD Data generation

## Servicio ATOM de descarga de datos

### [¿Cómo funciona este servicio?](#)

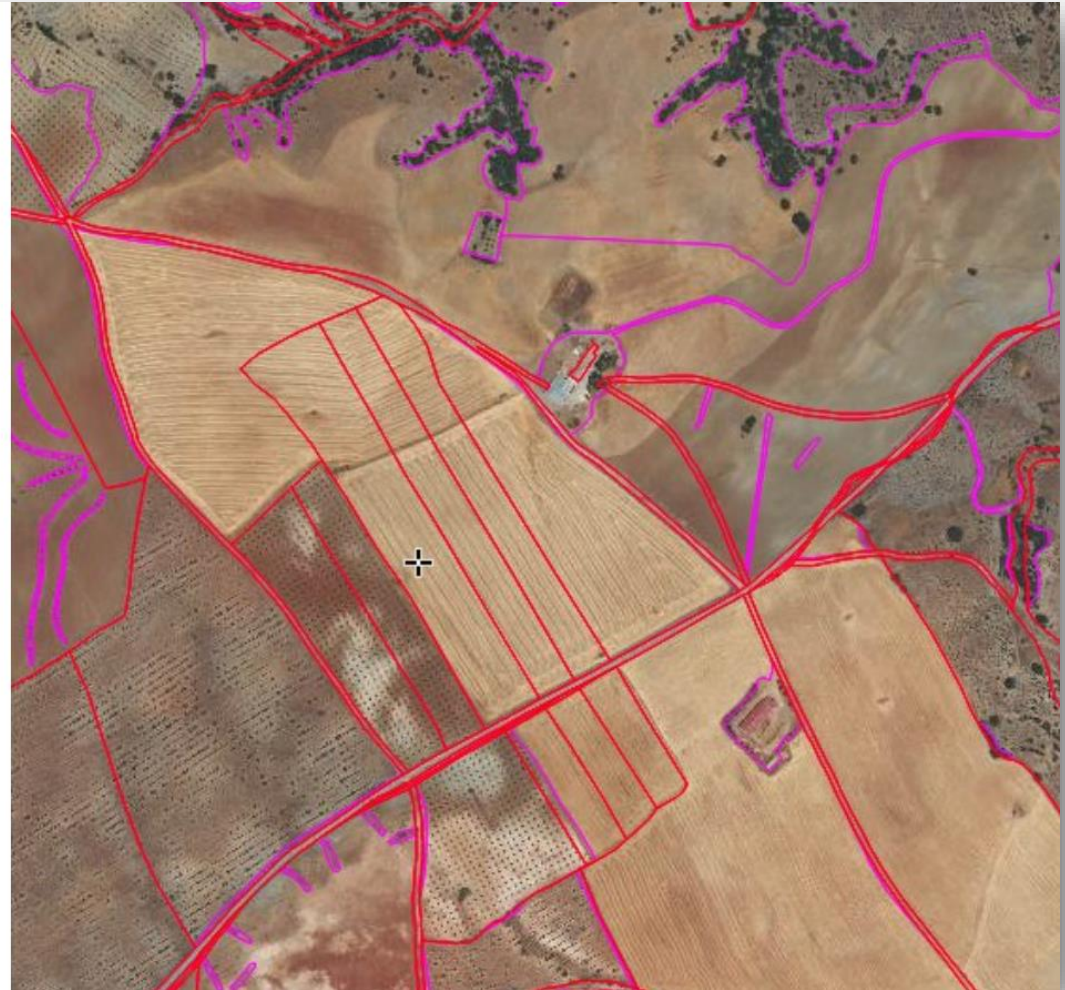
📅 El conjunto de datos que se ofrece en ese servicio Atom tiene una actualización anual en todas las CC.AA. excepto en Canarias. A continuación se indican las fechas de actualización:

- Todas las CC.AA (excepto Canarias): febrero
- Canarias: febrero, mayo y octubre

🕒 Se recomienda realizar la descarga fuera del horario comprendido entre las 8:00 y las 18:00.

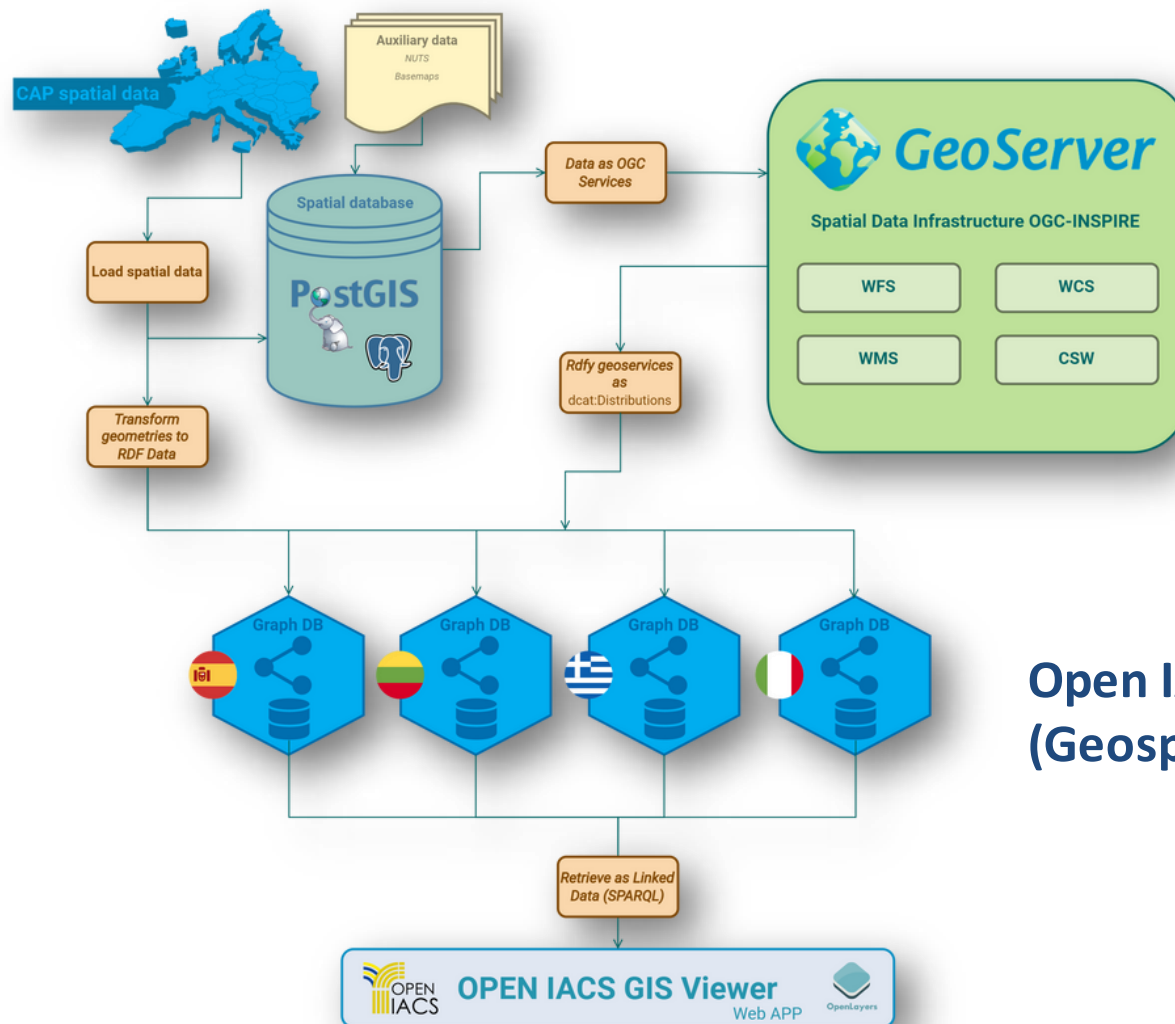
Si desea descargar los ficheros Atom del FEAGA debe leer y aceptar las siguientes condiciones:

LEER Y ACEPTAR LAS CONDICIONES



<https://www.fega.gob.es/orig/>

# Strategy for Integration with JRC-INSPIRE - LOD Data visualization



**Open IACS Geospatial Data  
(Geospatial Consortium)**

# Agenda

- 1) Objectives and current results of the project.
- 2) Publication of IACS Linked Open Data
- 3) Relating IACS Linked Open with External Data Sources
- 4) Integration of Open IACS results with INSPIRE.
- 5) **Key Issues of the Next Version.**

# Next Steps

- From Organizational Perspective
  - New entities interested in joining Open IACS network
- From Data Perspective
  - Livestock related datasets → High Value Datasets
- From Indicators Perspective
  - Integration in the GIS Web Viewer
  - Release the access to LOD Data
- From GIS Web Viewer Perspective
  - Improve User Experience