



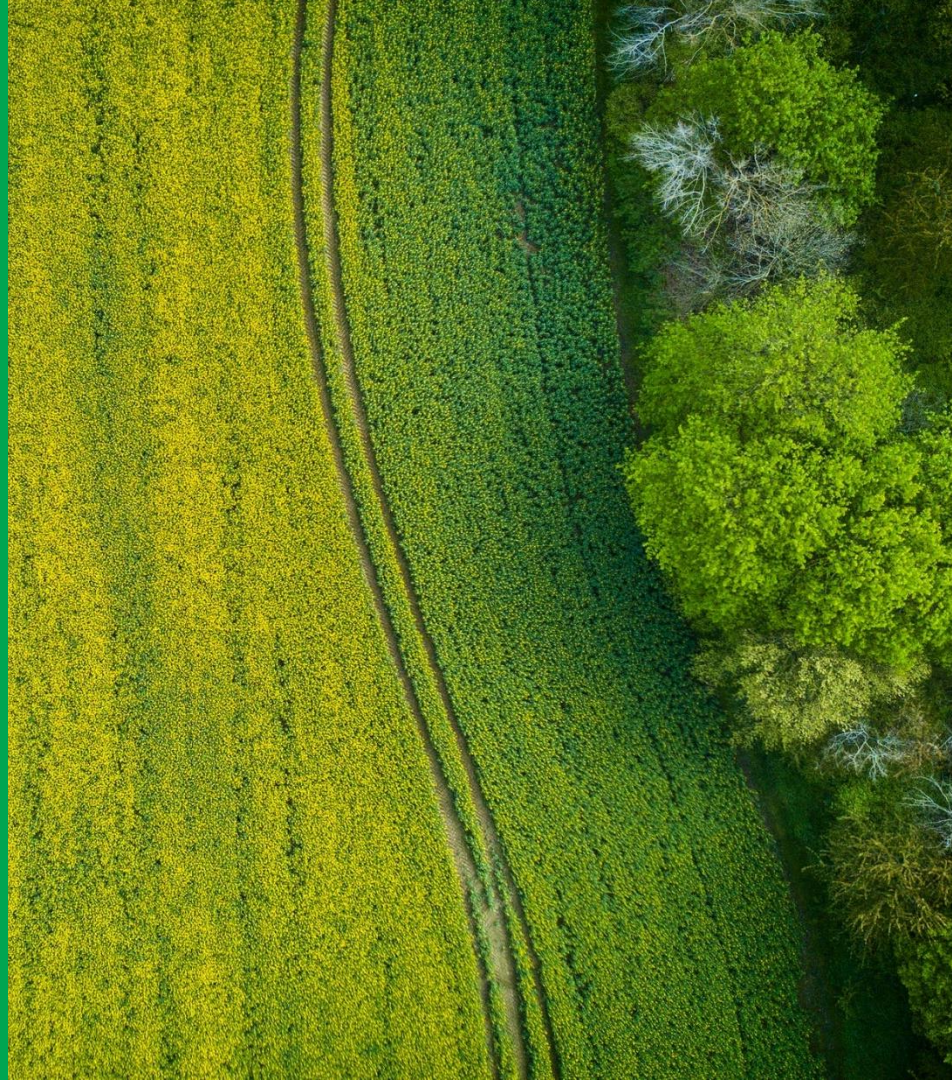
UC5b: SEAMLESS CLAIM

Salvatore Carfi

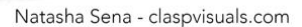
NIVA STAKEHOLDER FORUM **SANTORINI**
26 & 27 SEPTEMBER 2022



This project has received funding from the European Union's Horizon 2020 research and innovation programme under grant agreement No. 842009



SEAMLESS CLAIM



1 OBJECTIVES



OBJECTIVES



What is the UC about?

Put into practice what the definition of the **Automatic Claim** regulation required (article 65 par.4 (f), Horizontal EU Regulation No 2116/2021 of the future CAP) for the 3 intervention: BISS, Young Farmer and Eco-schema (article 69 par. 4 e 5, Horizontal EU Regulation No 2116/2021 of the future CAP).

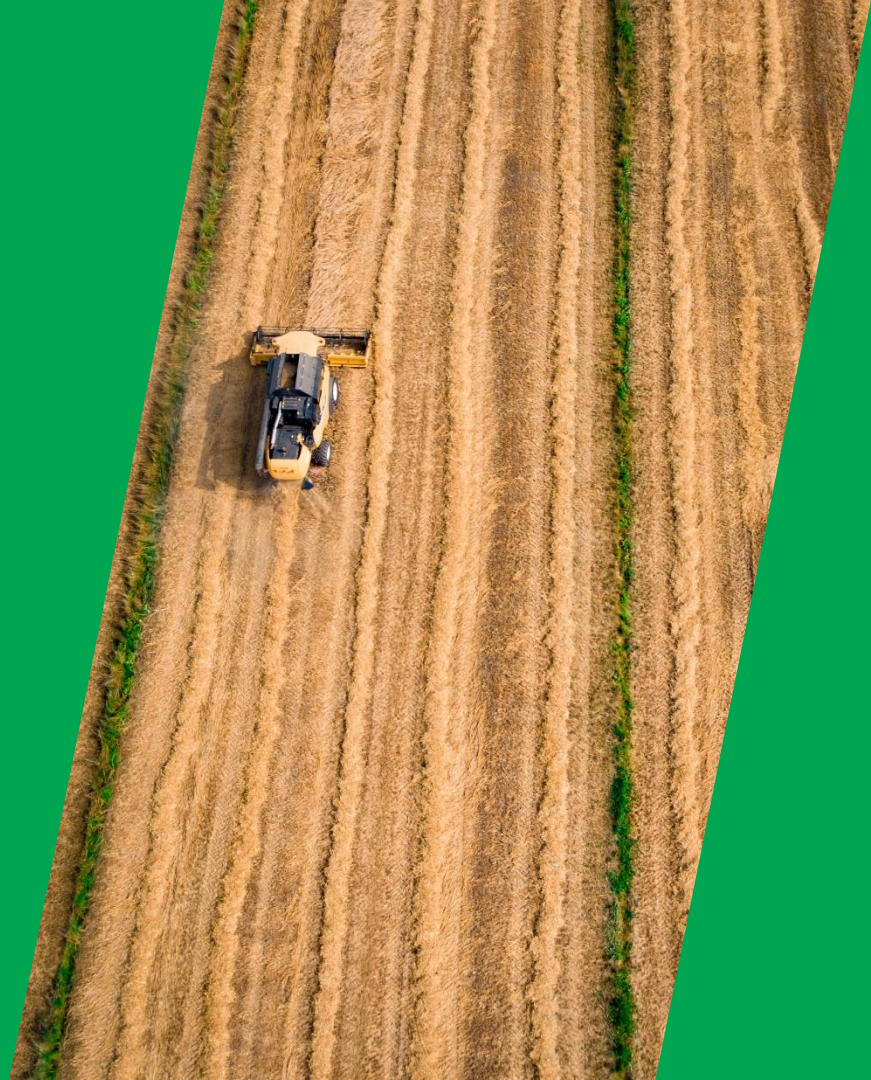


What was/were the objective(s)?

Simplify the **process** of managing payments for CAP interventions

Pay the beneficiaries **quickly** and without sanctions

2 RESULTS



RESULTS



What are the main results of the UC?

No sanctions in payments for BISS, Young Farmers and Eco-Scheme

Certainty of payments in good time

Payments increases approximately **by 3,78%** compared to the amount paid in GSAA 2019 on universe of a total of 593 companies with an error rate equal to zero.

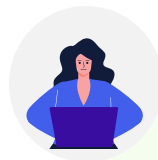


What components did the UC delivered?

Click-and-Pay: Seamless claim engine and management

Nidas: Certification of data and its source.

Simulation Tool: Data analysis for CAP makers to fix the unit amounts per hectare (for BISS and CRISS interventions)



For what are the components being used or planned to be used for?

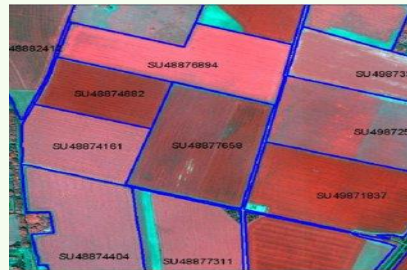
IACS databases and component used: LPIS, farm register dossier (graphical crop declaration), Entitlement Register or SAPS, CbM or Remote Sensing

For the future we suggest to use APIs to call data from the IACS components or external public databases.

RESULT - IACS DATABASES USED



Graphical Crop Declaration

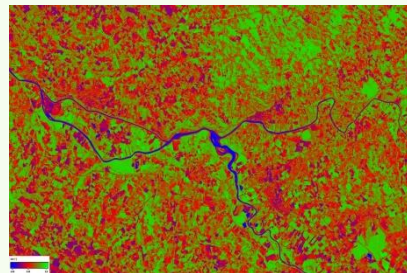


Land Parcel Identification Systems -LPIS

Este calcula totii

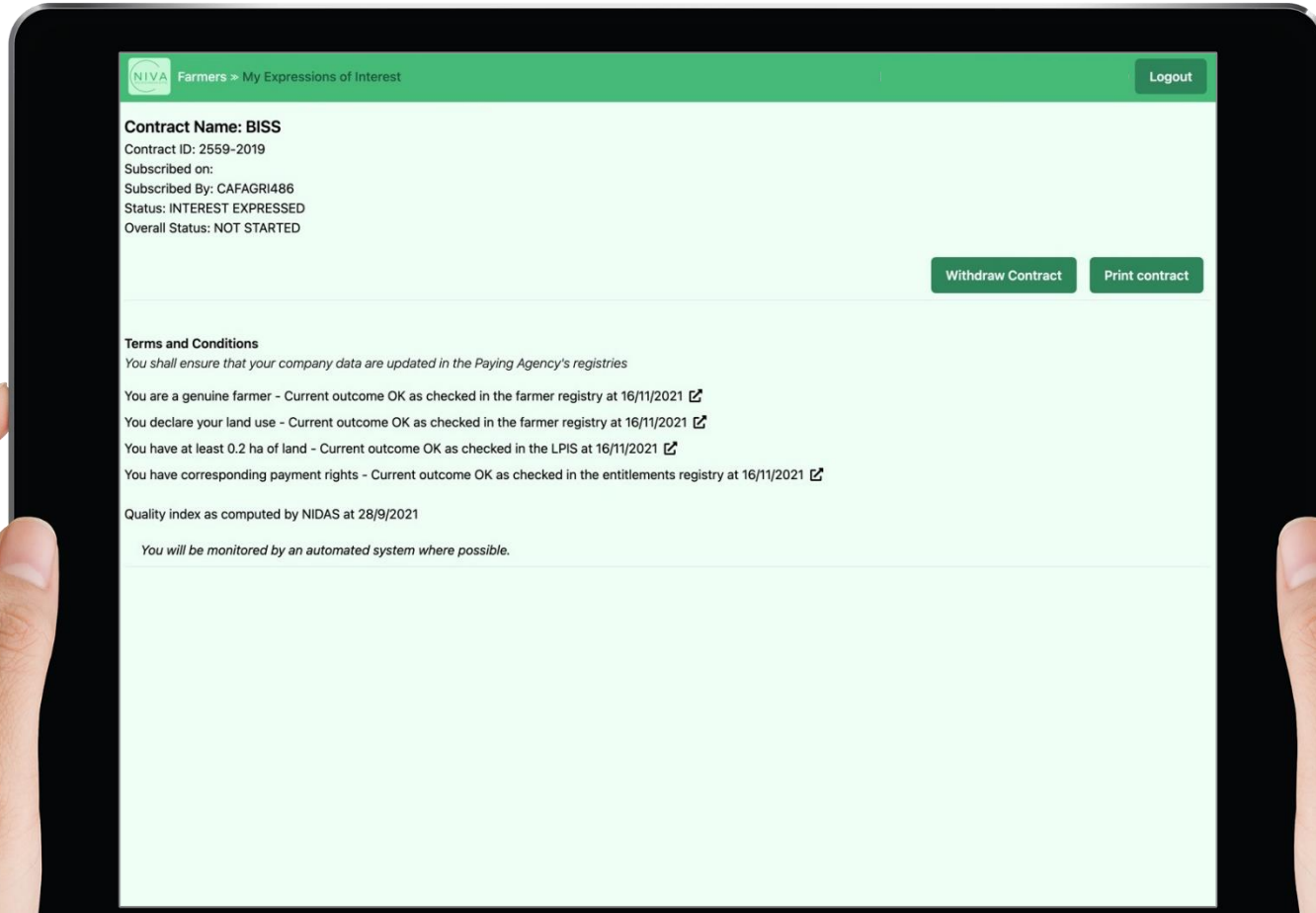
ANULAREA DATELOR DE PREZENTARE ALE DATELOR	
12/04/2014 - 20/04/2014	Revis
Superficie anulabila 2013	Suprafata refinanciata 2014
Prezenta tractamentul existent (in m ² 10 / 2)	Prezenta tractamentul existent (in m ² 10 / 2)
Prezenta anuala	Prezenta DAR 2013
	Prezenta DAR 2014
	Prezenta DAR 2015
	Prezenta DAR 2016
	Prezenta DAR 2017
	Prezenta DAR 2018
	Prezenta DAR 2019
	Prezenta DAR 2020
	Prezenta DAR 2021

Entitlement Register or SAPS



Check by Monitoring (CbM)

DEMO CLICK-AND-PAY



Farmers » My Expressions of Interest

Logout

Contract Name: BISS

Contract ID: 2559-2019

Subscribed on:

Subscribed By: CAFAGRI486

Status: INTEREST EXPRESSED

Overall Status: NOT STARTED

Withdraw Contract

Print contract

Terms and Conditions

You shall ensure that your company data are updated in the Paying Agency's registries

You are a genuine farmer - Current outcome OK as checked in the farmer registry at 16/11/2021 [🔗](#)

You declare your land use - Current outcome OK as checked in the farmer registry at 16/11/2021 [🔗](#)

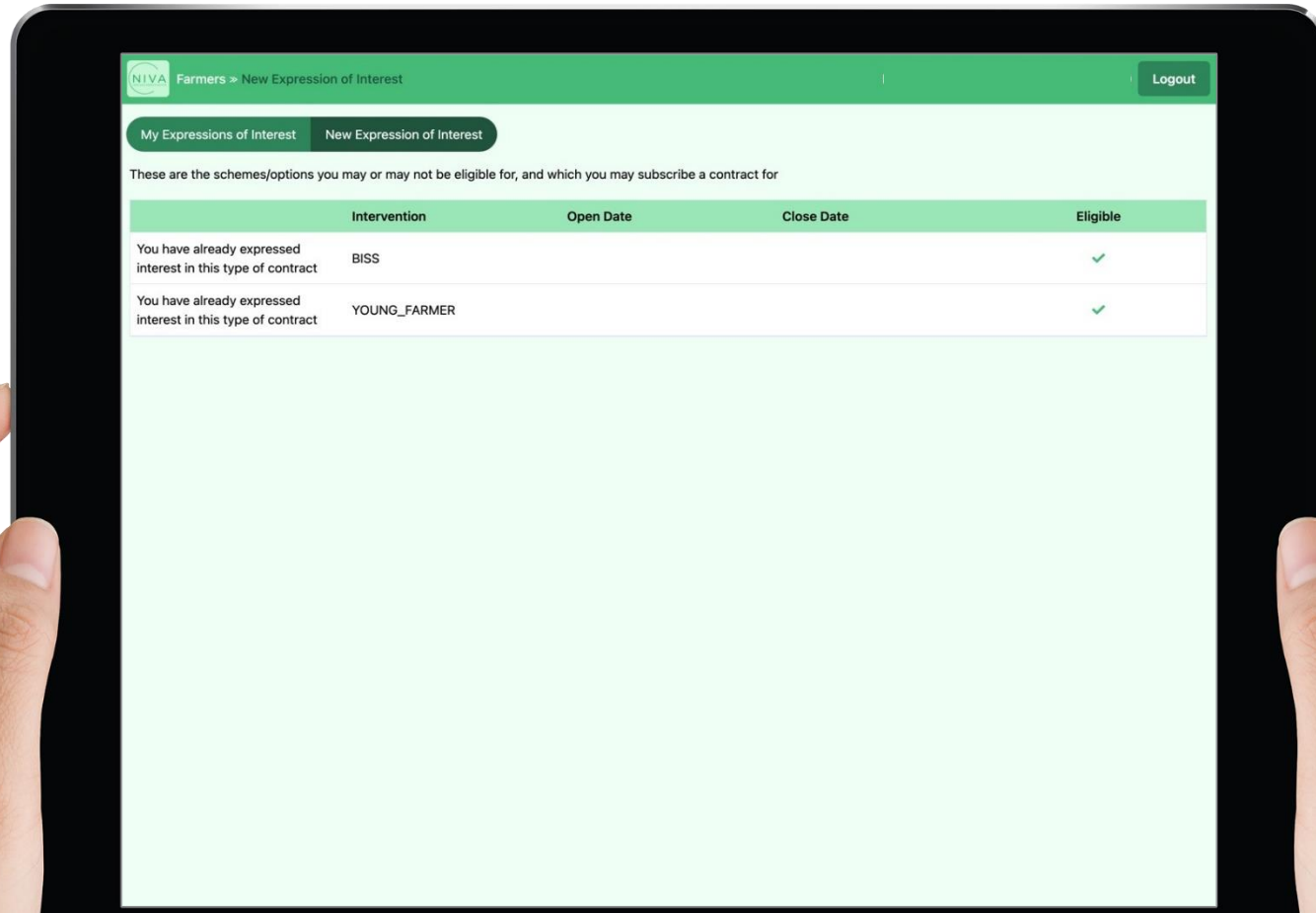
You have at least 0.2 ha of land - Current outcome OK as checked in the LPIS at 16/11/2021 [🔗](#)

You have corresponding payment rights - Current outcome OK as checked in the entitlements registry at 16/11/2021 [🔗](#)

Quality index as computed by NIDAS at 28/9/2021

You will be monitored by an automated system where possible.

DEMO CLICK-AND-PAY



DEMO NIDAS

Nidas Data Metadata lines Configuration

222656 - 11/01/2021

9 / 16

CUAA 222656 Date 01/11/2021

Metadata lines Other info

Metadata type	Metadata	Weight
Procedure	procedure1_description	1.00
Procedure	procedure2_description	1.00
Owner	owner5_description	1.00
Owner	owner2_description	1.00
Source	source1_description	1.00
Certification level	certification_level_description	1.00
Genuine Farmer validated by the farmer registry	Yes	1.00
	Yes	1.00
	No	1.00
Total area payable for BISS least 0.2 ha of land	Yes	1.00
You have corresponding payment rights	No	0.00
	Yes	1.00
	Yes	1.00

Quality index 0.92

DEMO SIMULATION TOOL

The image shows a hand holding a tablet that displays the NIVA-SMT EU-wide Simulation tool. The interface is clean and professional, with a white background and green accents. At the top, the NIVA-SMT logo is on the left, the title 'EU-wide Simulation tool' is in the center, and the CREA logo is on the right. Below the title bar, there is a navigation bar with three buttons: 'Simulation' (active), 'New Simulation', and '1 Unit Amount per hectare'. The main content area is titled 'Select File' and features a file selection bar with a 'Browse' button. Below this, a section titled 'Set parameters (Member State / Region specific)*' contains two columns of input fields. The left column includes 'MS CEILING 2023*', 'MS CEILING 2024*', 'MS CEILING 2025*', 'MS CEILING 2026*', and 'MINIMUM AREA*' (with a value of '1,0000'). The right column includes '% BISS 2023%', '% BISS 2024%', '% BISS 2025%', and '% BISS 2026%'. A 'Start Simulation' button is located at the bottom right of the parameter section. The footer of the tablet screen contains the European Union flag, a text block about NIVA's funding from the European Union's Horizon 2020 research and innovation programme, the TECSO logo, and the NIVA logo with the tagline 'INNOVATION VISION IN ACTION' and the number '11'.

NIVA-SMT

EU-wide Simulation tool

crea

Simulation New Simulation 1 Unit Amount per hectare

Select File

Browse

Set parameters (Member State / Region specific)*

MS CEILING 2023* % BISS 2023*

MS CEILING 2024* % BISS 2024*

MS CEILING 2025* % BISS 2025*

MS CEILING 2026* % BISS 2026*

MINIMUM AREA* 1,0000

Start Simulation

EUROPEAN UNION

NIVA has received funding from the European Union's Horizon 2020 research and innovation programme under grant agreement No 842009

TECSO

NIVA
INNOVATION VISION IN ACTION
11

3 BENEFITS



BENEFITS 1/2



What are the benefits of the UC?

Simplification of the application for claims based on annual update graphical farm register (without additional costs or waste of time to introduce the application).

Certainty of the payments:

- value amount in execution for payments,
- in good time and
- daily improvement of the interaction between farmer and PA

Reduction of disputes and administrative burden related to the spent for a claim.

Increase in payments without sanctions.



How does the UC contribute to the CAP and IACS?

Reduction of the error rate in payments terms: higher performance of the quality and legality of the CAP expenditures

The implemented model invokes and **harmonises all the data** necessary for an annual automatic claim (pre-filled) by the PA and confirmed in one click by the farmer.

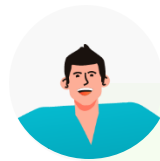
Pre-automatic claim data are pre-validated through integration with the IACS components, also giving a quality index and data accuracy of farmer holding.

BENEFITS 2/2



For what are the components being used or planned to be used for?

From 1st January 2023 on a voluntary basis to select which intervention/s by the MS, as stated in the EU regulation



Who or what benefits most from this UC?

Farmers, Paying Agencies, DG Agri

4 CHALLENGES



CHALLENGES



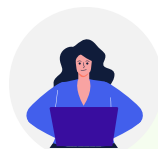
Which pitfalls are identified?

Adaptation of the national regulatory system for the introduction of the automatic claim and intervention selected



Which ideas are there to challenge these pitfalls?

Dissemination and promotion activities describing the benefits of the automatic claim system especially towards policy maker and main users / stakeholders



What is when needed to challenge these pitfalls successfully?

Starting from 2023 (first quarter)

THANK YOU!



This project has received funding from the European Union's Horizon 2020 research and innovation programme under grant agreement No. 842009

